



New convenient surface transport

Surface transport is becoming increasingly more popular each year, and the passenger traffic is fast approaching that of the metro.

7.6 million
trips

by surface transport per day

90 %

of land vehicles replaced





THE MAGISTRAL NETWORK

Magistral is a network of surface transport routes connecting the city centre to remote districts. Phase One of the network was launched in 2016, and Phase Two on 7 October 2017.

The new route network helped dramatically cut waiting times for buses in the city centre, from 16 minutes to 3–5 minutes, with 14.5 km of dedicated bus lanes introduced in Moscow's centre specifically for routes within the network. These initiatives have enabled fast and easy travel to and around the city centre by bus, trolleybus, or tram without any transfers.

Route types within the Magistral network



HIGH-FREQUENCY routes are the longest, connecting the city centre with residential districts. Frequency: 5–10 min.

19 high-frequency routes



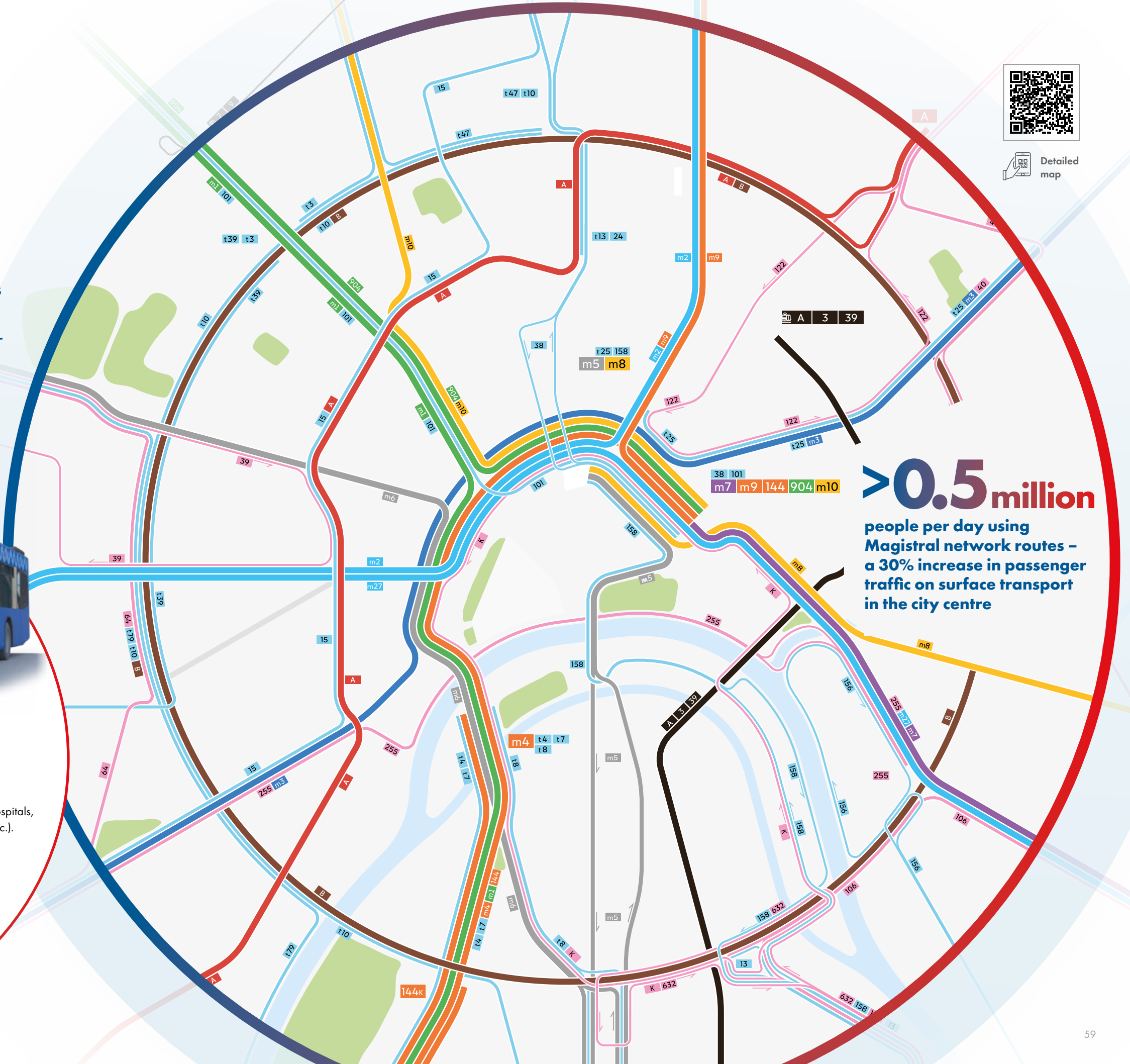
LOCAL routes are shorter and connect Moscow districts to the city centre. Frequency: 10–15 min.

16 local routes



SPECIALISED routes take passengers to social infrastructure facilities (hospitals, My Documents offices, etc.). Frequency: up to 30 min.

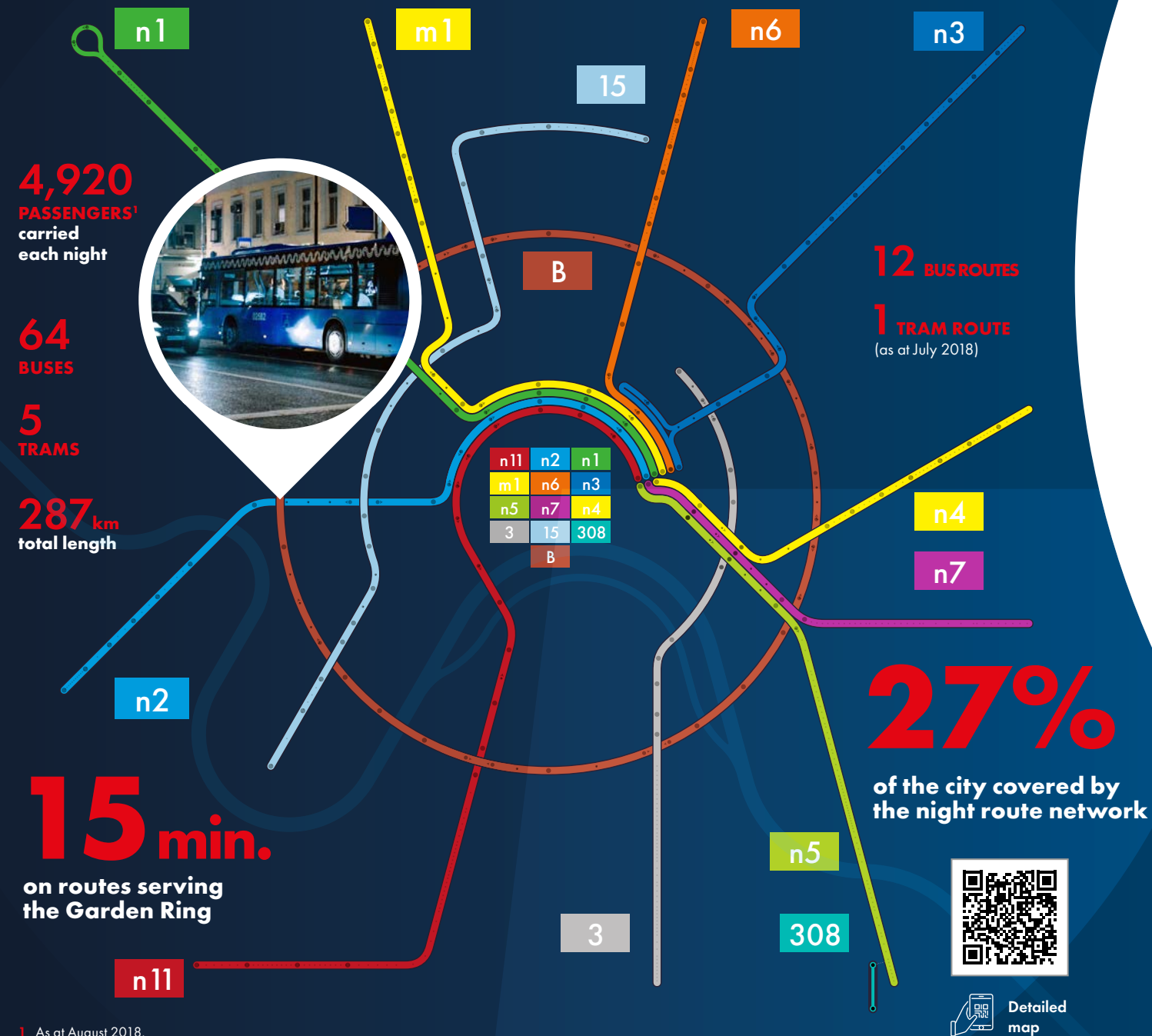
8 specialised routes



Detailed map

NIGHT ROUTE NETWORK

The city centre never sleeps. Night-time surface transport routes connect the centre with Sheremetyevo airport and residential districts located close to the Moscow Ring Road. They allow Moscow residents to travel in the city as the rhythm of their lives requires.



¹ As at August 2018.

TRANSPORT HUB IN SLAVYANSKAYA SQUARE

A major transport hub, Kitay-Gorod, has been set up in **Slavyanskaya Square**. It operates around the clock, serving 12 day routes and seven night routes.

- Sheltered waiting area

- Arrivals display
- Wi-Fi
- USB ports to charge mobile phones
- Specially-designed wayfinding pylons

- Numbered stops
- Signs
- Network map

160,000

daily passengers using routes originating at the Kitay-Gorod transport hub





DEDICATED LANES

Dedicated bus lanes prioritise public transport on the roads. They can also be used by school buses, ambulances and other emergency vehicles, cyclists, and registered taxis.¹

Dedicated lanes enable passengers to reach any destination in Moscow faster and estimate their travel time more accurately. Reverse dedicated lanes are set up in some streets in the city centre – Solyanka, Bolshaya Lubyanka, Sretenka, and Vozdvizhenka, whereby passengers can exit on traffic islands with pedestrian crossings leading to both sides of the road.

Improved public transport performance

290 km²

total length of the 43 lanes launched since 2011

+12%

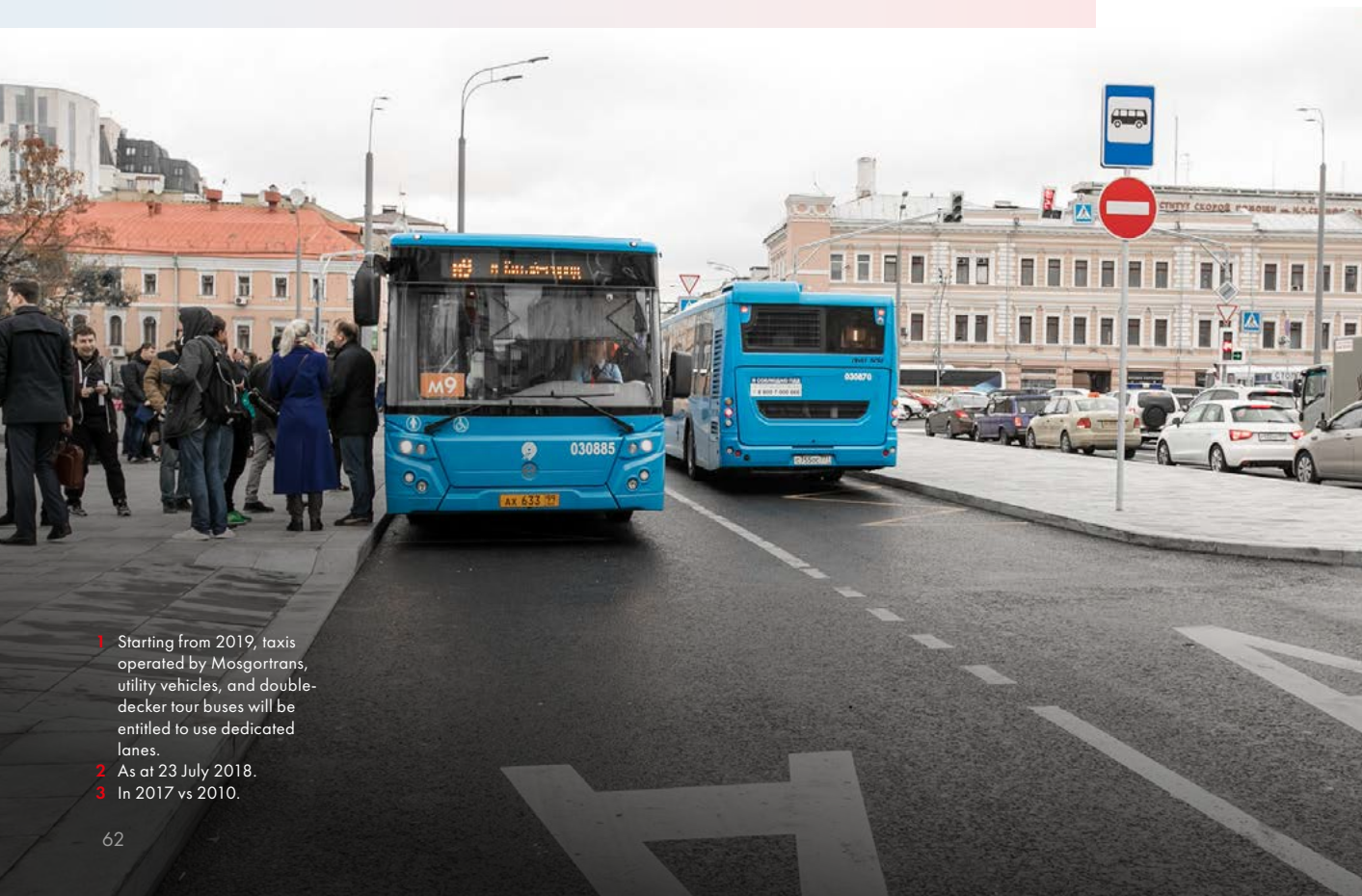
passenger traffic increase on routes using dedicated lanes

+15%

increase in the speed of public transport

–30%³

road accidents involving surface public transport

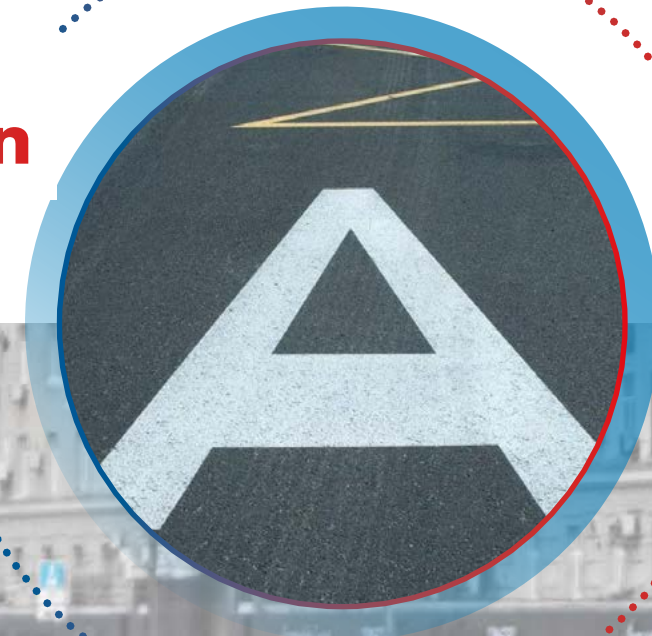


¹ Starting from 2019, taxis operated by Mosgortrans, utility vehicles, and double-decker tour buses will be entitled to use dedicated lanes.

² As at 23 July 2018.

³ In 2017 vs 2010.

Over
2.8 million
trips per day in dedicated lanes



A SINGLE STANDARD OF SERVICE

for Moscow residents on surface public transport

Moscow pioneered a surface passenger transport reform in Russia to ensure high quality of passenger services.

Improvements brought by the new model

- ✓ New buses introduced on all routes
- ✓ Fares are paid using a unified ticketing system providing reduced fares
- ✓ Vehicles are Euro 5 compliant
- ✓ Service quality is monitored by the Moscow Government
- ✓ Buses are wheelchair accessible
- ✓ Speed limits and traffic rules are complied with
- ✓ Air conditioning units installed

About **1 million**
daily passengers on commercial buses



Unified standard of quality, safety, and cost of surface passenger services

In the near future,
the new transport
management model
will be extended to
the New Moscow

Buses operated by commercial carriers can be small, medium-sized, or large depending on the passenger traffic on a particular route.

2,000
buses operated by
commercial carriers serve
214 routes¹



22
new routes
operated under
the new model
will be launched
in New Moscow

13
routes
will be launched
by the end of 2018

9
routes
will be launched
by the end of 2019

118
commercial
buses
will be launched

For **254,000**
people
(76% of TiNAO residents)
transport availability will
improve

¹ As at June 2018.